



# THE Steel Magnolia



## THE Steel Magnolia Model number: 27ELN28523AH19

**3 beds • 2 baths • 1456 sq.ft. • 28' width • 52' depth**

Our home building facilities invest in continuous product and process improvements. Plans, dimensions, features, materials, specifications and availability are subject to change without notice or obligation. Renderings and floor plans are representative likenesses of our homes and may differ from the actual homes. We invite you to tour a Home Center near you and inspect the highest value in quality housing available or call (540) 382-9015 to speak with a Home Consultant. Copyright 2017, CMH. All rights reserved.

<https://www.claytonhomesofthenewrivervalley.com>

### CLAYTON HOMES- CHRISTIANSBURG

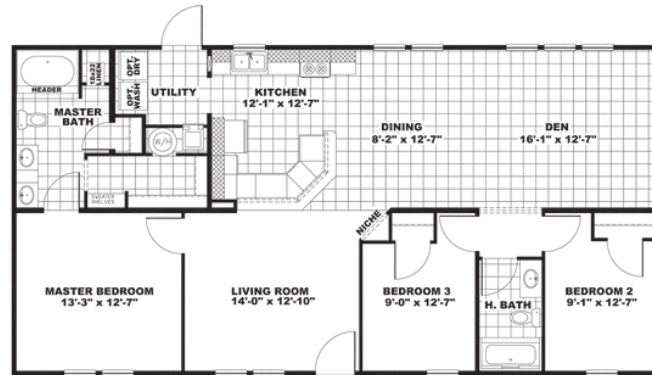
1340 W. MAIN ST  
CHRISTIANSBURG, VA 24073

Monday - Thursday: 9am - 7pm  
Friday: 9am - 6pm  
Saturday: 9am - 5pm  
Sunday: Closed

(540) 382-9015



# THE Steel Magnolia



OPT. BEDROOM 4



ALTERNATE KITCHEN W/ISLAND

## THE Steel Magnolia Model number: 27ELN28523AH19

**3 beds • 2 baths • 1456 sq.ft. • 28' width • 52' depth**

Our home building facilities invest in continuous product and process improvements. Plans, dimensions, features, materials, specifications and availability are subject to change without notice or obligation. Renderings and floor plans are representative likenesses of our homes and may differ from the actual homes. We invite you to tour a Home Center near you and inspect the highest value in quality housing available or call (540) 382-9015 to speak with a Home Consultant. Copyright 2017, CMH. All rights reserved.

<https://www.claytonhomesofthenewrivervalley.com>

### CLAYTON HOMES- CHRISTIANSBURG

1340 W. MAIN ST  
CHRISTIANSBURG, VA 24073

Monday - Thursday: 9am - 7pm

Friday: 9am - 6pm

Saturday: 9am - 5pm

Sunday: Closed

(540) 382-9015